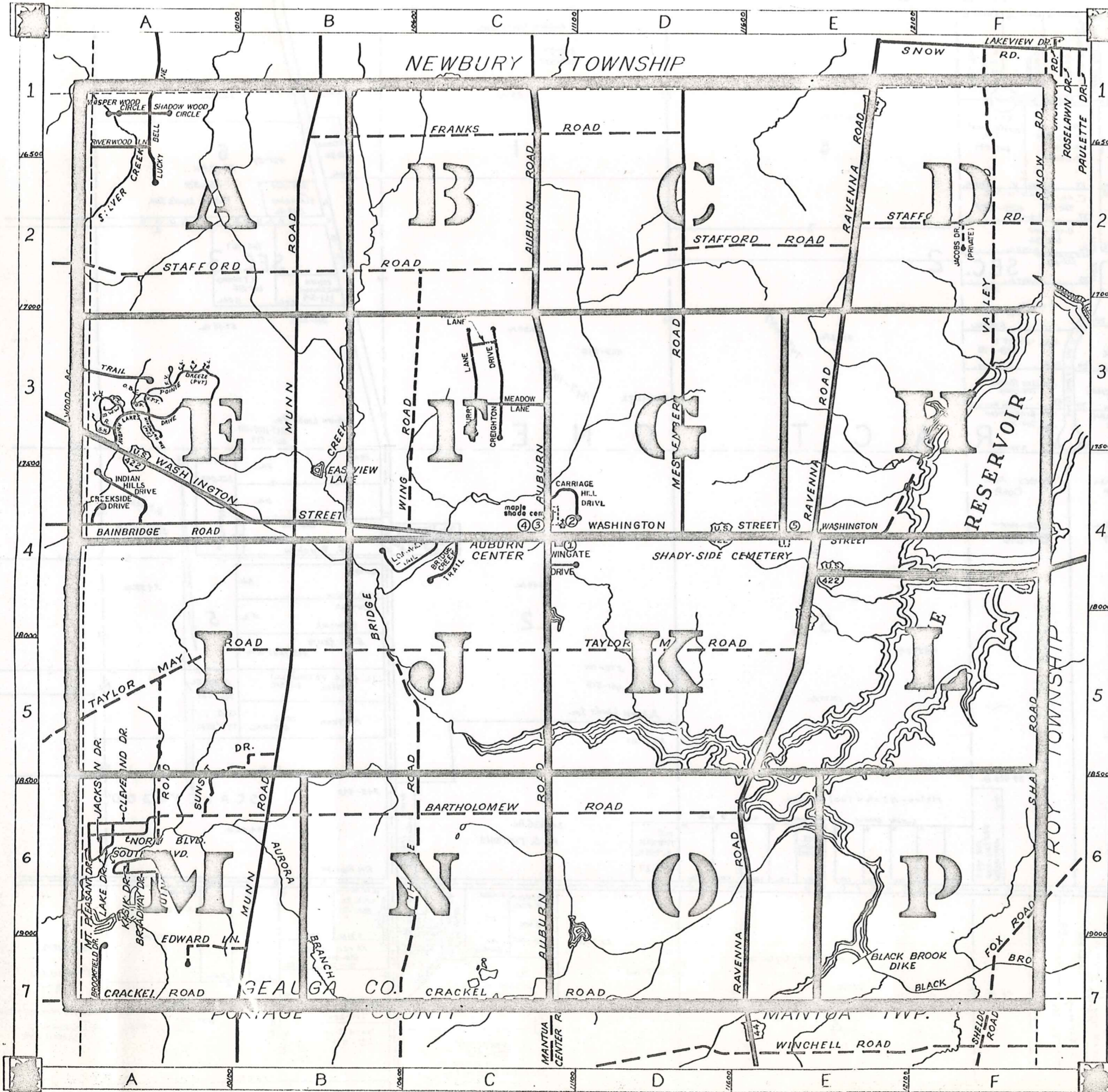


# ROAD INDEX



<b>A</b> AUBURN ROAD AUBURN LAKES DRIVE	<b>C1-C7</b> A3	<b>J</b> JACKSON DRIVE JACOBS DRIVE (PVT.)	<b>A6</b> F2	<b>S</b> SHADOW WOOD CIRCLE SHAW ROAD SIGNAL HILL (PVT.) SNOW ROAD SOUTH BLVD. STAFFORD ROAD SUNSET DRIVE	<b>A1</b> F4-F6 A3 F1-F2 A6 A2-E2 B5-A6
<b>B</b> BAINBRIDGE ROAD BARTHOLOMEW RD. BIRDIE LANE (PVT.) BRIDGE CREEK TR. BROADWAY DRIVE BROOKFIELD DRIVE	<b>A4</b> A6-D6 A3 C4 A6 A7	<b>K</b> KASIK DRIVE	<b>A6</b>	<b>T</b> TAYLOR MAY RD. THORPE ROAD TIMBER LN. TWIN CREEKS (PVT.)	<b>A5-E5</b> B5-B7 C3 A3
<b>C</b> CARRIAGE HILL CHIPPING LANE (PVT.) CLEVELAND DRIVE CRACKEL ROAD CREEKSIDE DRIVE CREIGHTON DRIVE CURRY LANE	<b>D3</b> A3 A6 A7-E7 A4 C3 C3	<b>L</b> LAKE DRIVE LONGVIEW TRAIL LUCKY BELL LANE	<b>A6</b> C4 A1	<b>U</b>	
<b>D</b> EAGLES POINTE (PVT.) EDWARD LANE	<b>A3</b> A7	<b>N</b> NORTH BLYD.	<b>A6</b>	<b>V</b> VALLEY ROAD	<b>F1-E4</b>
<b>E</b> FAIRWAY VIEW (PVT.) FOX ROAD FRANKS ROAD	<b>A3</b> F6-F7 B1-D1	<b>O</b> OVERLOOK BROOK CTR (PVT.) OVERLOOK BROOK DR (PVT.)	<b>A3</b> A3	<b>W</b> WASHINGTON ST. WHISPER WOOD CIRCLE WING ROAD WINGATE DRIVE WOOD ACRE TRAIL	<b>A3-E4</b> A1 C3-C4 C4 A3
<b>F</b> HEATHER HILL (PVT.)	<b>A3</b>	<b>P</b> POINTE BREEZE (PVT.)	<b>A3</b>	<b>Y</b>	
<b>G</b> INDIAN HILLS DR.	<b>A4</b>	<b>Q</b> QUINN ROAD	<b>A5-A6</b>	<b>Z</b>	
<b>H</b> INDIAN HILLS DR.	<b>A4</b>	<b>R</b> RAVENNA ROAD RIVERWOOD LANE	<b>E1-E7</b> A1		

- ① AUBURN ELEM. SCHOOL
- ② AUBURN COMMUNITY CHURCH
- ③ AUBURN TOWN HALL
- ④ AUBURN VOL. FIRE DEPT.
- ⑤ STATE HIGHWAY GARAGE (SUB-STATION)

## AUBURN TOWNSHIP

SCALE: 1" = 2000'

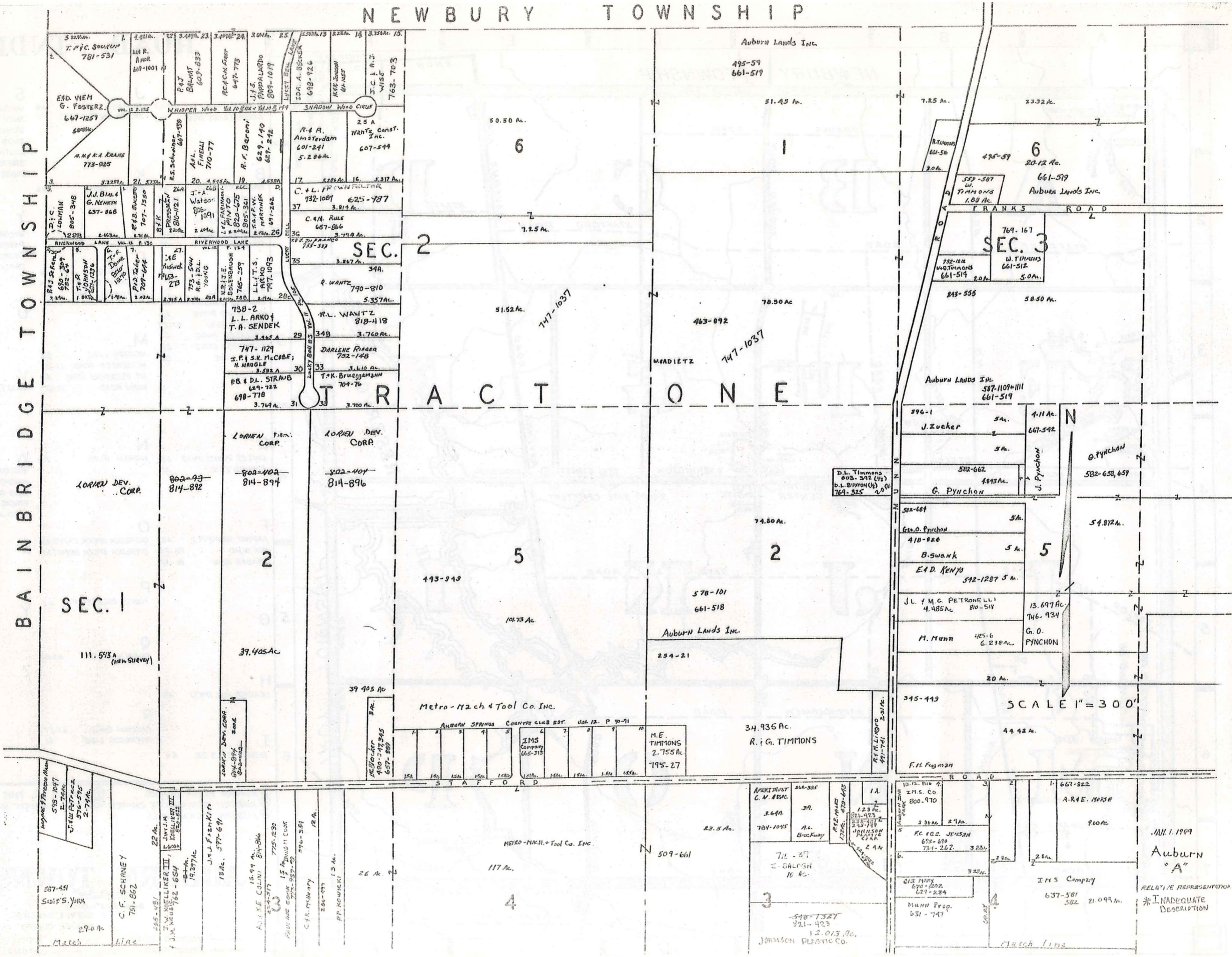
ROBERT L. PHILLIPS  
GEAUGA COUNTY ENGINEER

--- UNPAVED ROAD  
--- PAVED ROAD  
--- TOWNSHIP LINE  
--- COUNTY LINE



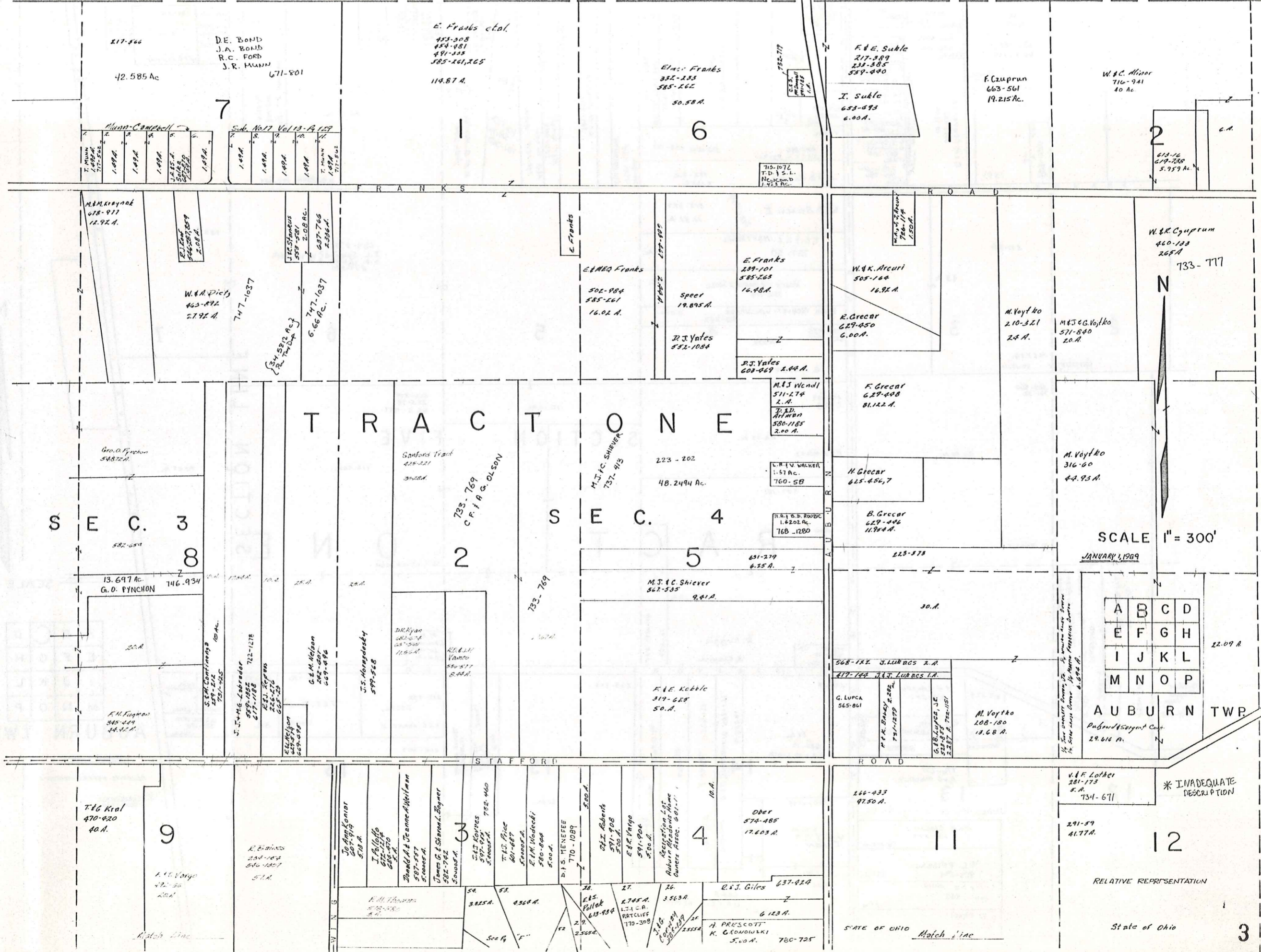
NEWBURY TOWNSHIP

BAINBRIDGE TOWNSHIP



SCALE 1" = 300'

JAN 1 1989  
Auburn  
"A"  
RELATIVE REPRESENTATION  
\* INADEQUATE DESCRIPTION



217-866  
42.585 Ac  
D.E. BOND  
J.A. BOND  
R.C. FORD  
J.R. MUNN  
671-801

E. Franks et al.  
453-308  
454-981  
481-885  
585-261,265  
114.87 A.

E. Franks  
352-233  
585-262  
50.58 A.

F. & E. Soble  
217-389  
233-385  
539-490  
I. Soble  
653-893  
6.00 A.

F. Czuprun  
663-561  
19.215 Ac.

W. & C. Minor  
716-941  
40 Ac.

Munn-Campbell  
Sub. No. 17 Vol. 13-P. 157  
1.49 A.  
1.49 A.  
1.49 A.  
1.49 A.  
1.49 A.  
1.49 A.  
1.49 A.

M. & M. Kroyack  
618-977  
12.92 A.

W. & A. Dicks  
463-892  
27.92 A.

747-1037  
6.66 Ac.

E. & M. E. Franks  
502-984  
585-261  
16.02 A.

Speer  
19.895 A.

E. Franks  
239-101  
585-263  
16.48 A.

R. J. Yates  
532-1084

R. J. Yates  
602-469  
2.44 A.

W. & K. Arcuri  
505-164  
16.92 A.

R. Greear  
629-450  
6.00 A.

M. Voytko  
210-321  
2.4 A.

M. & J. C. Voytko  
571-840  
2.0 A.

W. & R. Czuprun  
460-133  
26.8 A.  
733-777

SEC. 3  
582-054

13.697 Ac.  
746.934  
G. D. PYNCHON

F. M. Egan  
545-449  
44.32 A.

J. J. & M. G. Labrador  
559-1952  
617-1188  
722-1278

G. E. M. Nelson  
262-601  
669-696

J. S. Horvath  
599-528

D. R. Ryan  
442-474  
115.0 A.

R. E. & J. H. Vanzo  
630-577  
8.44 A.

Sanford Frack  
425-221  
30.00 A.

733-769  
C. F. & A. G. OLSON

M. J. & C. SHIEVER  
737-473  
48.2494 Ac.

223-202  
48.2494 Ac.

M. & J. Wendl  
511-274  
2. A.

L. R. & V. WALKER  
1.57 Ac.  
760-58

H. & B. D. ROOBC  
1.6202 Ac.  
76B-1280

F. Greear  
629-498  
81.122 A.

H. Greear  
625-456,7

B. Greear  
629-446  
11.944 A.

M. Voytko  
316-60  
4.4.93 A.

2

733-769

1.02 A.

1.02 A.

1.02 A.

1.02 A.

1.02 A.

1.02 A.

1.02 A.

1.02 A.

1.02 A.

1.02 A.

5

M. J. & C. Shiever  
562-335  
9.41 A.

631-279  
6.35 A.

F. & E. Kobbic  
319-625  
50. A.

568-144 J. L. LURGS 2 A.

417-144 J. L. LURGS 1 A.

G. LUPCA  
565-861

F. & K. BAILEY 2.00 A.

731-1270

G. & B. LUPCA, JR.

528-899

528-899

2.287 A. 722-1151

M. Voytko  
208-180  
13.68 A.

A	B	C	D
E	F	G	H
I	J	K	L
M	N	O	P

AUBURN TWP.  
Paige & Son's Plat. Cont.  
29.616 A.

SCALE 1" = 300'  
JANUARY 1, 1989

T. & E. Kral  
470-920  
40 A.

A. T. Vargo  
471-50  
20 A.

R. & G. Wines  
234-164  
540-1007  
57.1 A.

J. & M. Connor  
407-919  
57.8 A.

I. P. Pappo  
612-214  
688-470  
3.1 A.

Donald & Jeanne Alletman  
597-557  
5.000 A.

James G. & Sharon L. Boyner  
582-762  
3.000 A.

54  
3.825 A.

53  
4.364 A.

52  
2.565 A.

51  
2.748 A.

50  
3.563 A.

49  
6.123 A.

48  
7.803 A.

47  
6.123 A.

46  
7.803 A.

45  
6.123 A.

44  
7.803 A.

43  
6.123 A.

42  
7.803 A.

41  
6.123 A.

40  
7.803 A.

39  
6.123 A.

38  
7.803 A.

37  
6.123 A.

36  
7.803 A.

Match Line

Match Line

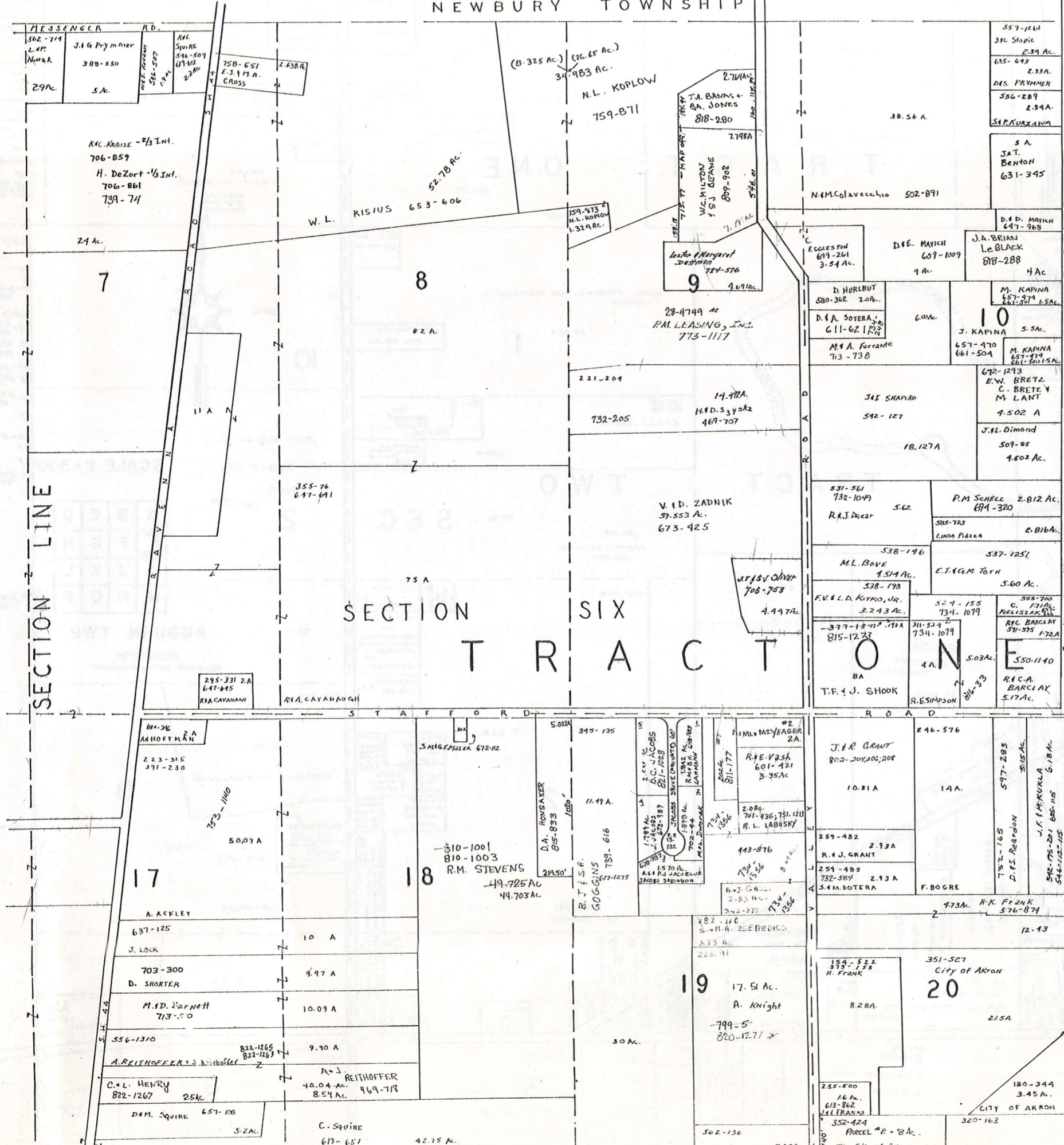
RELATIVE REPRESENTATION

State of Ohio

\* INADEQUATE DESCRIPTION



T R O Y T O W N S H I P



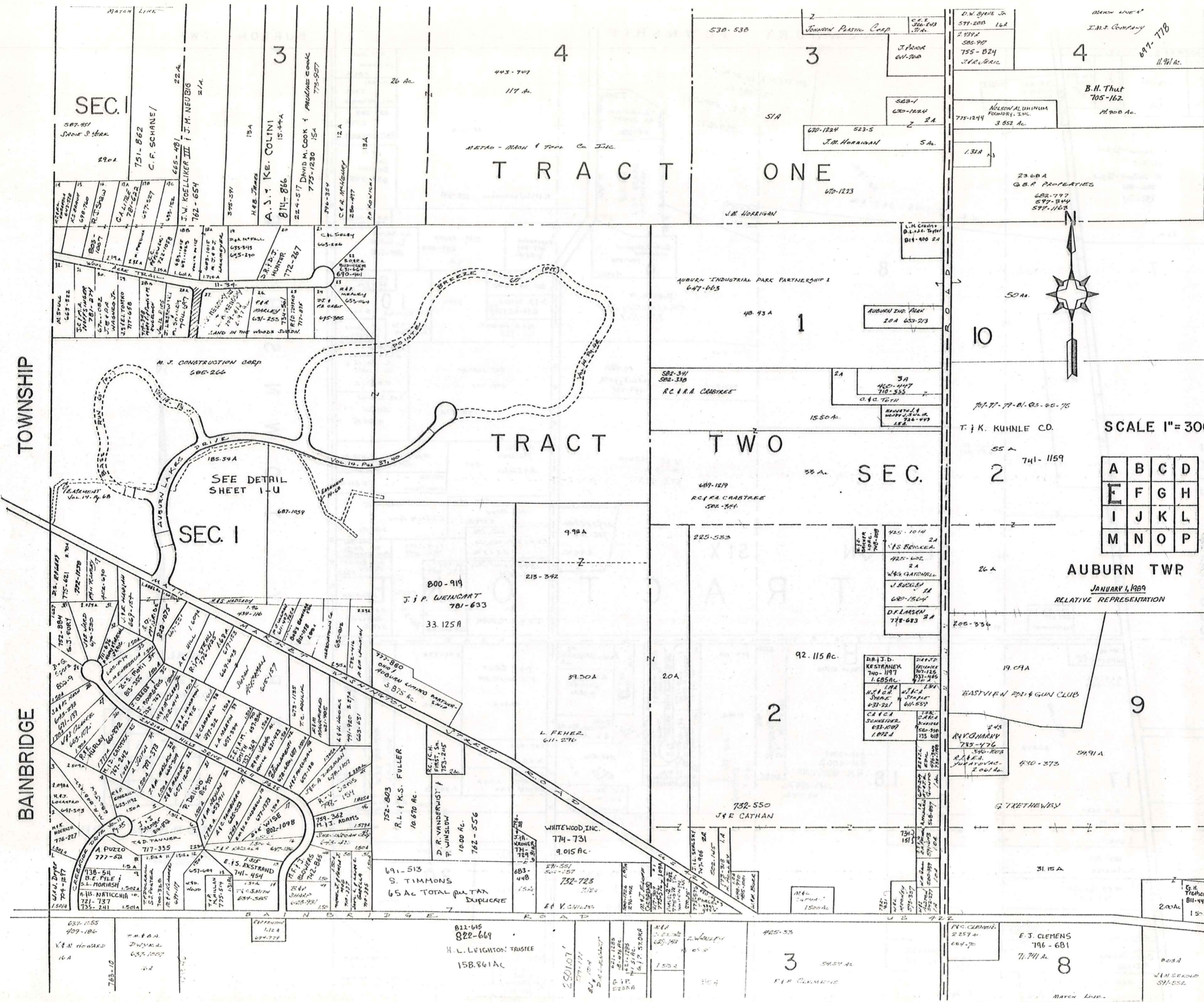
SCALE 1" = 300'

JANUARY 1, 1909  
RELATIVE REPRESENTATION

A	B	C	D
E	F	G	H
I	J	K	L
M	N	O	P

AUBURN TWP.

\* INADEQUATE DESCRIPTION



SEE DETAIL SHEET 1-U  
 E. KRAMES TRUSTEE  
 VOL 14 PG 72  
 AUBURN LAKES COVE  
 DONATE WINDY WEG  
 W-7  
 A. 402 KRAMES 703-349  
 B-30  
 C-36  
 W-9  
 D. A.B. BARSKA 703-305  
 E. A. H. HAZENBERG  
 5/19/03 703-304  
 F. C. J. RUSSELL 8/4/03  
 703-303  
 W-12  
 D-14 A.H. SCHULZ  
 E-12  
 F-10 DONALD L. 707-376  
 ALVIN J. 707-377  
 12.8 E - EAST OGD SERVICE

700-1339  
 T. B. H. APPRENT  
 700-1300  
 U-4: 14-110  
 A  
 B-DONALD RICHMILLER  
 705-649  
 W-3  
 A - P. DiBiasi  
 706-814  
 B. W. J. Rini  
 708-427  
 W-110  
 A R.H. ANTON  
 707-370  
 B K.O. WARNER  
 707-1185  
 C  
 Vol 21 14-124  
 A  
 B  
 C. S. H. M. H. H. F.  
 706-4 710-798

A	B	C	D
E	F	G	H
I	J	K	L
M	N	O	P

\* Inadequate Description



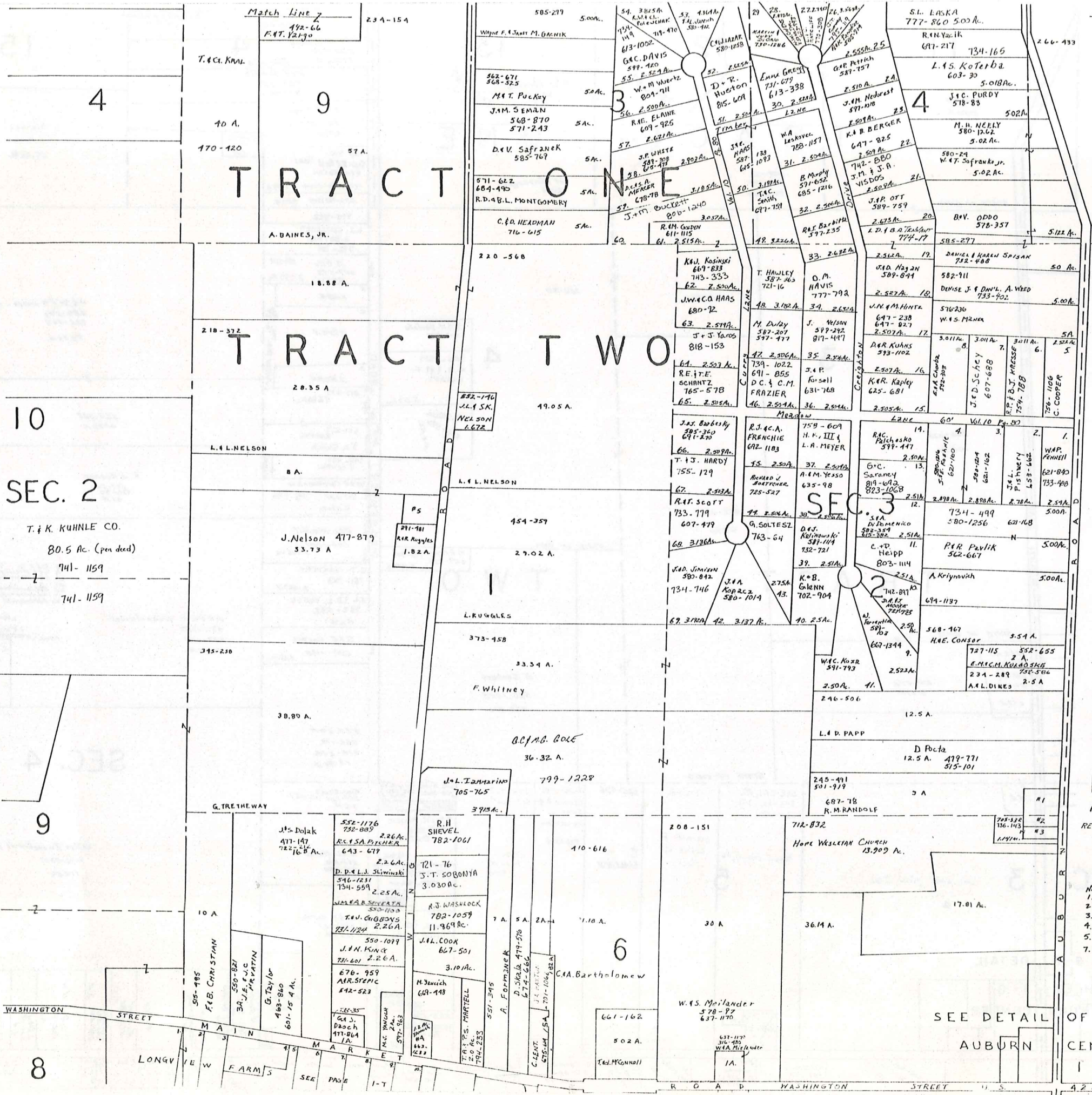
SCALE 1" = 300'

AUBURN TWP  
 JANUARY 1, 1989  
 RELATIVE REPRESENTATION

TOWNSHIP

BAINBRIDGE

MARCH LINE



Match Line

Match Line

SCALE 1" = 300'

JAN 1, 1989

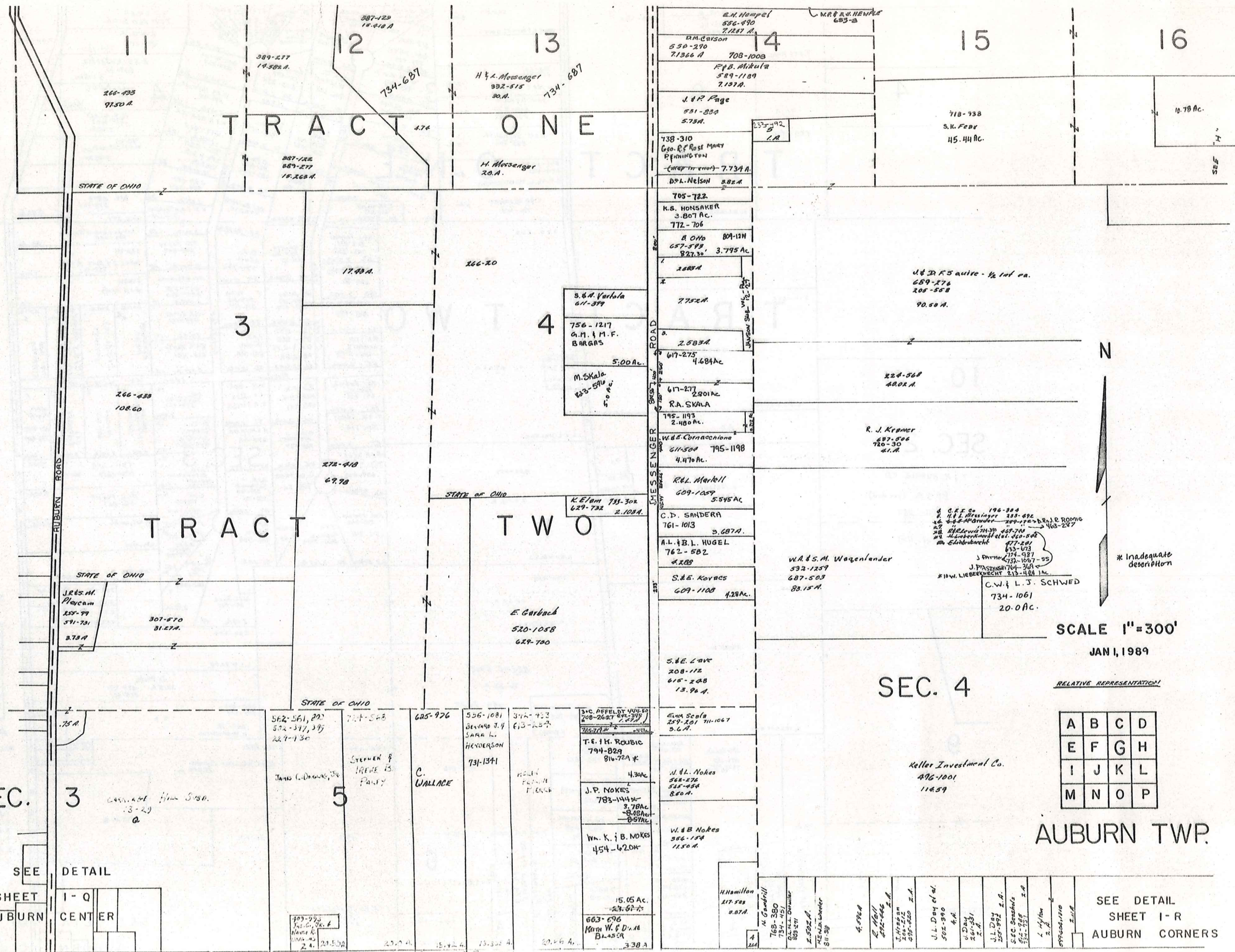
A	B	C	D
E	F	G	H
I	J	K	L
M	N	O	P

AUBURN TWP.  
RELATIVE REPRESENTATION

No.  
1. R. Randolph 752-305 1.6c.  
2. D.P. SHEVER 737-1316 0.46Ac.  
3. G.J. J. J. HATTER 734-143 .55Ac.  
4. M.P.M. Vainch 663-1233 1.2Ac.  
5. B. Whitney 231-123 712Ac.  
7. B.H. Van Dyke 303-191 1.6c.

SEE DETAIL OF  
AUBURN  
CENTER  
I Q

7



TRACT ONE

TRACT TWO

SEC. 4

SEC. 3

AUBURN TWP.

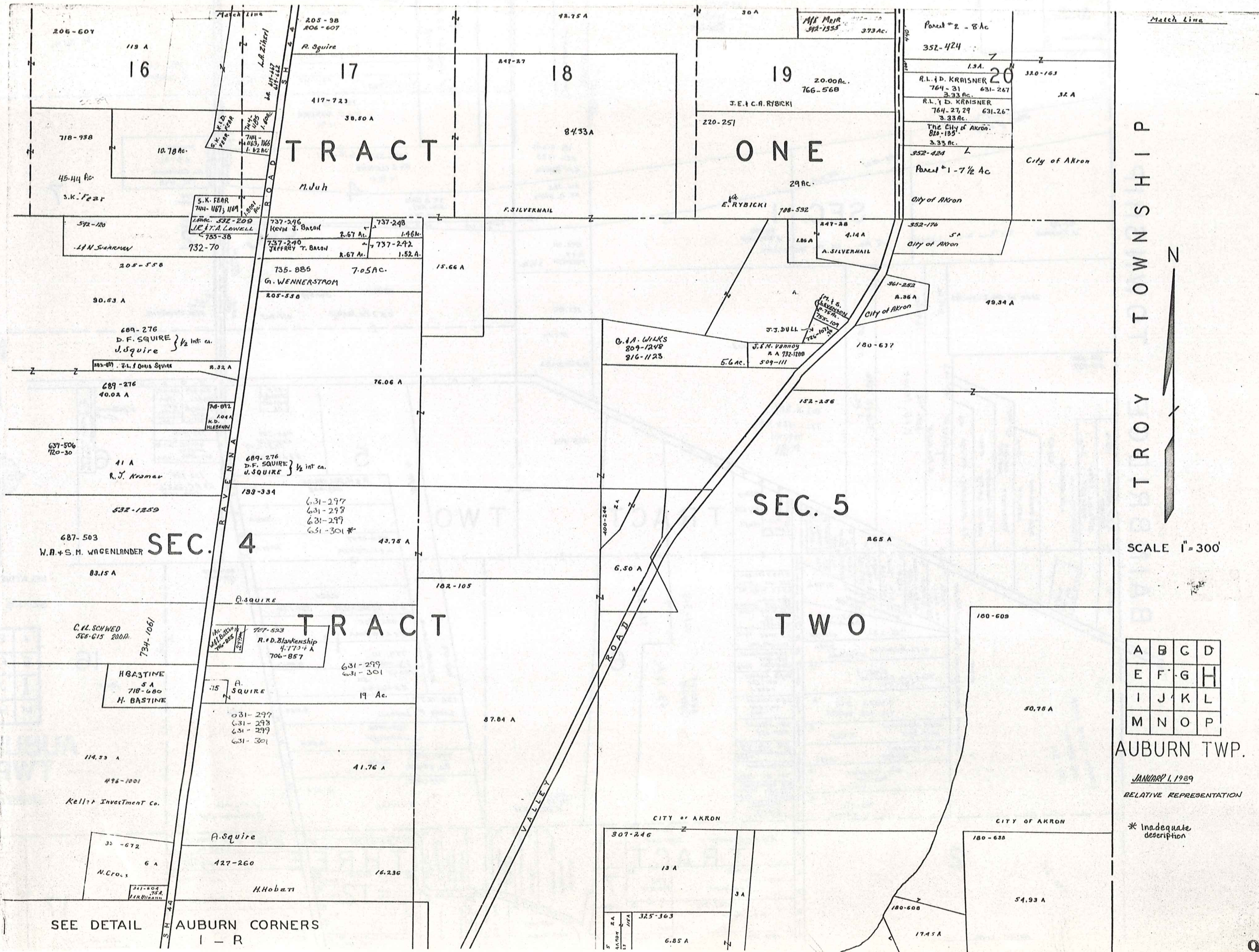
SCALE 1"=300'  
JAN 1, 1989

A	B	C	D
E	F	G	H
I	J	K	L
M	N	O	P

SEE DETAIL SHEET I-Q AUBURN CORNERS

SEE DETAIL SHEET I-Q AUBURN CENTER

Match Line



TROY TOWNSHIP



SCALE 1" = 300'

A	B	C	D
E	F	G	H
I	J	K	L
M	N	O	P

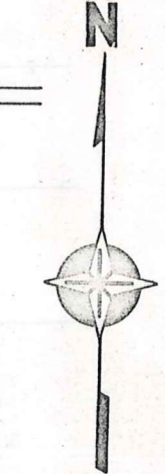
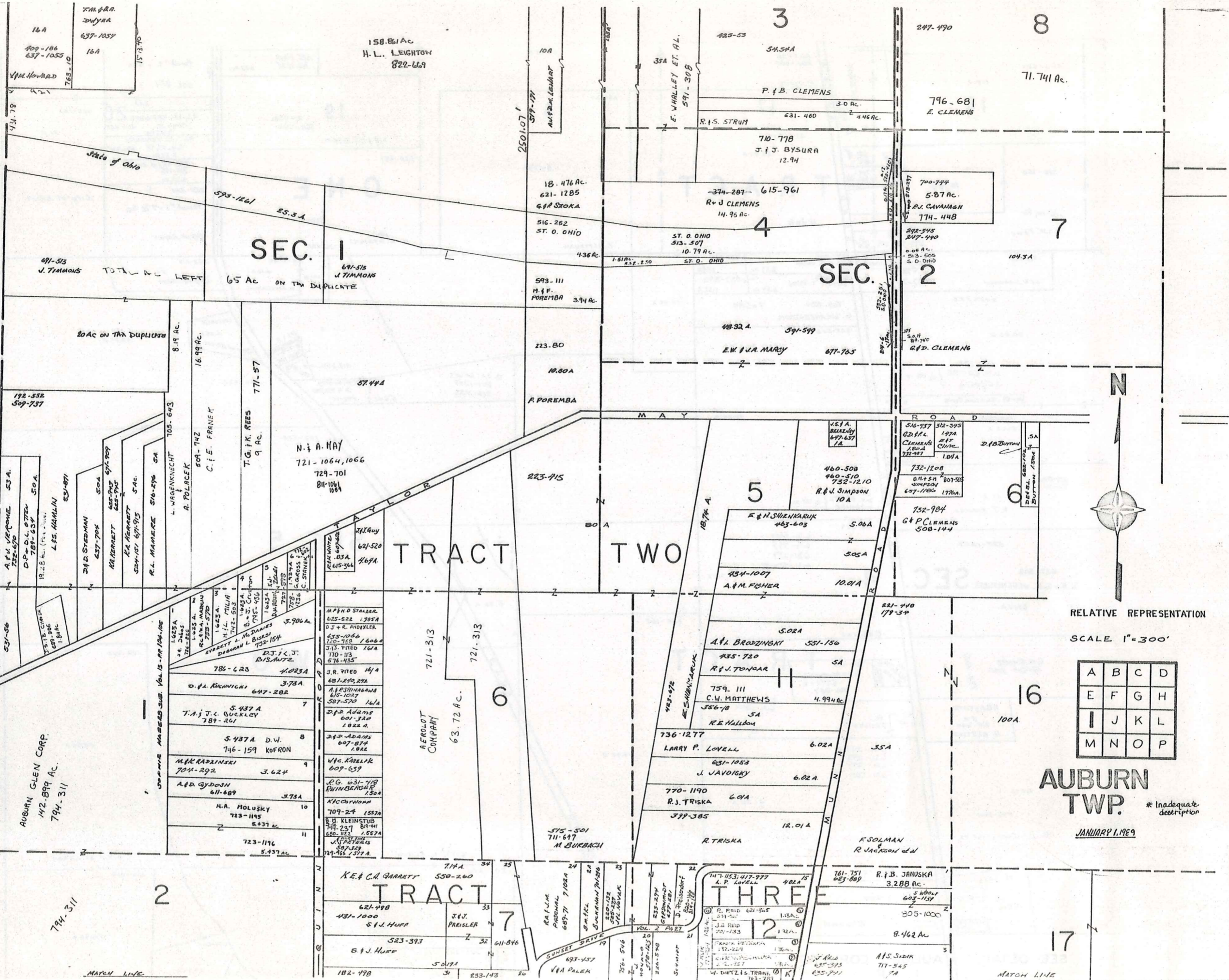
AUBURN TWP.

JANUARY 1, 1929  
RELATIVE REPRESENTATION

\* Inadequate description

SEE DETAIL AUBURN CORNERS I - R

BAINBRIDGE TOWNSHIP



RELATIVE REPRESENTATION  
SCALE 1"=300'

A	B	C	D
E	F	G	H
I	J	K	L
M	N	O	P

AUBURN TWP.  
\* Inadequate description  
JANUARY 1, 1969

MATCH LINE

MATCH LINE

Match Line

Match Line

74 A  
8

7  
10.43 A  
SEC. 2

27.60 A  
6

11  
35 A  
16

12  
17

LONGVIEW FARMS  
SEE PG 1-T  
TRACT TWO  
SEC 3

14.740 A  
485-527  
5.420 A  
5.200 A  
513-122  
24.800 A  
673-539  
DA. & M.D. BUTTON  
809-1234  
DE & WL. BUTTON  
675-1866  
10 A  
492-885  
V.R.J. Chiochetti  
5.85 Ac.  
7  
E.P. R.A. DONALD  
61-4599  
643-451  
132-506  
R. Roubic  
132-1230  
2.180 A  
35.15 Ac.

217-366  
311-627  
L.P. May  
2 A  
39.50 A  
2.6 Ac.  
L.W. MAY  
217-366  
661-946  
661-1212  
818-825  
M. J. Z. S. EBERGUS  
F.V. SZORA  
2392 A  
643-788  
F.V. SZORA  
336-546, 547  
351-447  
47.50 A  
A. DERECSEY  
205-551  
2.175 A  
A. DERECSEY

221-440  
179-134  
35 A  
F. SALMAN &  
N. JACKSON et al.  
EW. M.  
BROWN  
47.065 Ac.  
E.R. J.A.  
BROWN  
21  
693-1301  
5.322 Ac.  
46.12 Ac.  
E. J. BROWN  
502-436  
1.792 A  
693-1221  
H.C. S.K.  
Mitchell  
695-112  
44.9 A  
607-995  
520-116  
E. Andrews et al.

6.03 A  
427-154  
719-117  
J.E. TAYLOR

251-573  
667-1  
J.F. O. OLEBY

663-778  
667-223  
11.87 Ac.  
S.J. PETER

663-778  
R. Roubic  
132-1230

2.180 A  
35.15 Ac.

M.S. & W.  
ROUBIC  
767-125

295-437  
50 A  
A. DERECSEY

409-360  
26  
100 A  
City of Akron

27  
100 A

22  
50 A

27  
100 A

27  
100 A

27  
100 A

27  
100 A

SEE DETAIL SHEET I-Q  
AUBURN CENTER

62.75 A  
3 A  
2 A  
5 A

2.59 Ac. 737-747  
667-223  
8.19 A

11.87 Ac.  
S.J. PETER  
425-921 585-379  
A. M. LAWRENCE  
589-418  
J. Lawrence  
701 A

286-725  
196-502  
8  
10 A  
5.15 A  
132-1226  
A.M. ROUBIC

705-492  
2.6  
M.K. Small  
719-1195  
3.001 A  
JOHN H. WARD  
F.W. 635-47  
435-78  
2.441 Ac  
2.076 AC  
655-51

205-551  
2.175 A  
A. DERECSEY

23 A  
31

793-56  
352-426

60 A  
32

60 A  
32

60 A  
32

60 A  
32

60 A  
32



SCALE 1"=300'

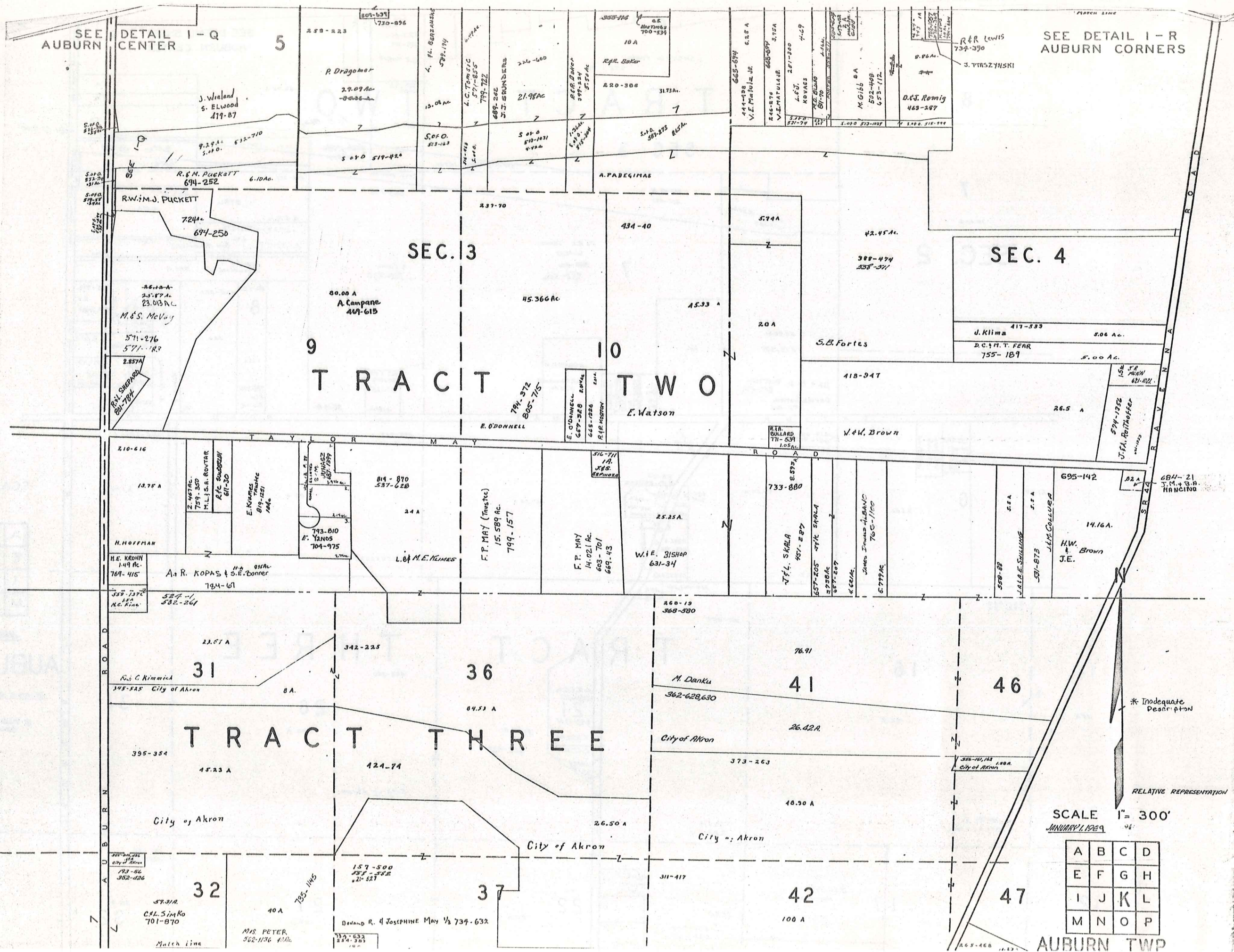
A	B	C	D
E	F	G	H
I	J	K	L
M	N	O	P

JANUARY 1, 1929

AUBURN TWP.

RELATIVE REPRESENTATION

\* Inadequate description



SEE AUBURN

DETAIL I-Q CENTER

5

SEE DETAIL I-R AUBURN CORNERS

SEC. 3

SEC. 4

9

10

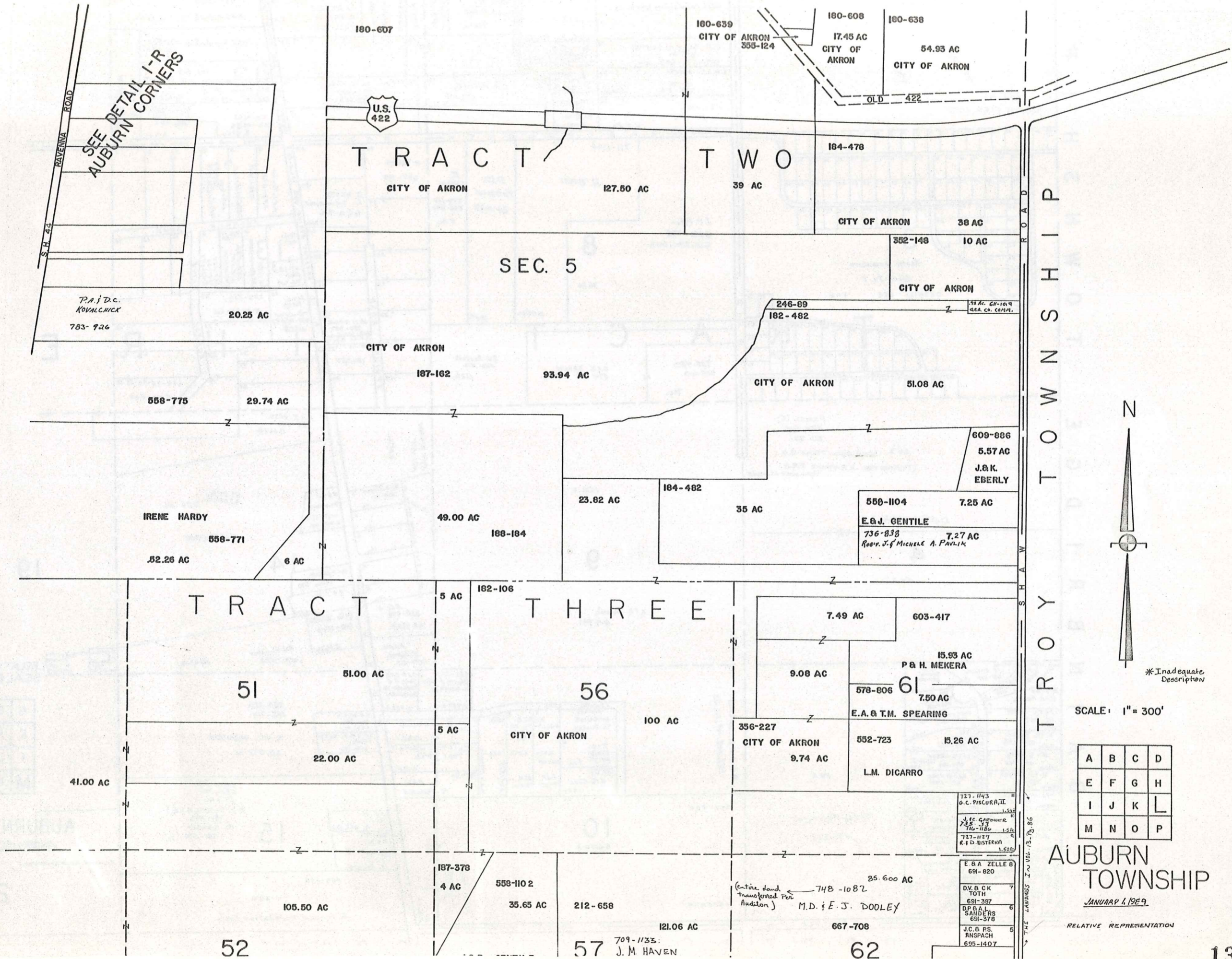
TRACT TWO

TRACT THREE

SCALE 1" = 300'  
JANUARY 1, 1929

A	B	C	D
E	F	G	H
I	J	K	L
M	N	O	P

AUBURN TWP



SEE DETAIL I-R  
AUBURN CORNERS

P.A. D.C.  
KOVALCHICK  
783-926

IRENE HARDY  
558-771  
52.26 AC

180-607



TRACT TWO

CITY OF AKRON 127.50 AC

180-639  
CITY OF AKRON  
355-124

180-608  
17.45 AC  
CITY OF AKRON

180-638  
54.93 AC  
CITY OF AKRON

184-478

CITY OF AKRON 38 AC

SEC. 5

352-148 10 AC

CITY OF AKRON

CITY OF AKRON

187-162

93.94 AC

CITY OF AKRON

51.08 AC

558-775 29.74 AC

558-771

52.26 AC

6 AC

49.00 AC

188-184

23.82 AC

184-482

35 AC

609-886  
5.57 AC  
J. & K.  
EBERLY

558-1104 7.25 AC  
E. & J. GENTILE  
736-838 7.27 AC  
Rev. J. MICHELE A. PAWLAK

TRACT

TRACT THREE

51

51.00 AC

56

100 AC

7.49 AC

603-417

9.08 AC

15.93 AC  
P & H. MEKERA

578-806 7.50 AC

E. A. & T. M. SPEARING

41.00 AC

22.00 AC

356-227  
CITY OF AKRON  
9.74 AC

552-723 15.26 AC

L. M. DICARRO

727-1143  
G. C. PISCURATI  
735-53  
716-1186  
727-1127  
R. I. D. BISTERKA

E. & A. ZELLE  
691-820  
D. V. & C. K. TOOTH  
691-397  
D. P. & A. L. SANDERS  
691-378  
J. C. & P. S. ANSPACH  
695-1407

52

105.50 AC

187-378  
4 AC

558-1102  
35.65 AC

212-658

121.06 AC

57

709-1135  
J. M. HAVEN

(entire land transferred per Auditor)  
748-1082  
M. D. & E. J. DOOLEY

667-708

62

TROY TOWNSHIP



\*Inadequate Description

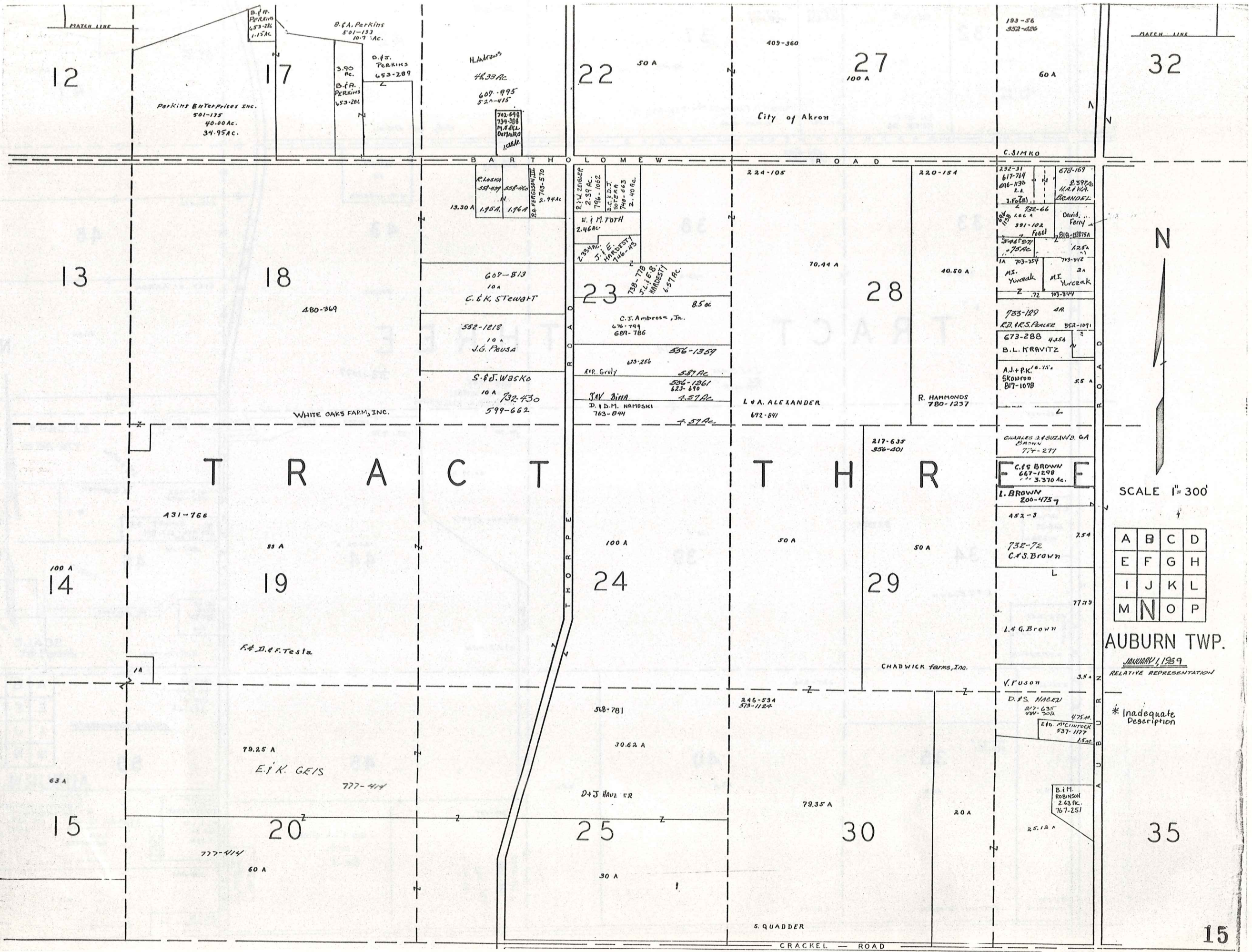
SCALE: 1" = 300'

A	B	C	D
E	F	G	H
I	J	K	L
M	N	O	P

AUBURN TOWNSHIP  
JANUARY 1, 1929

RELATIVE REPRESENTATION



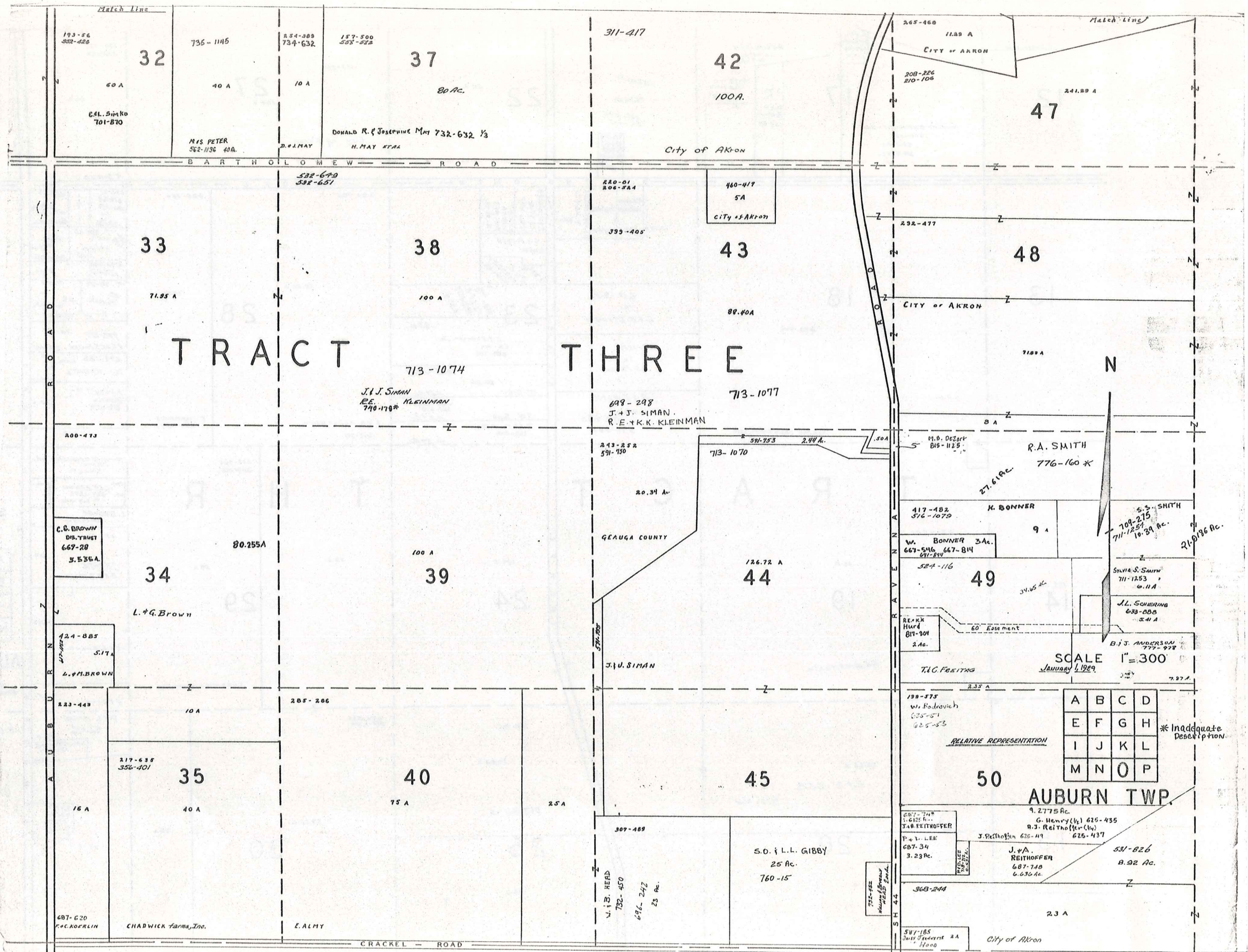


SCALE 1" = 300'

A	B	C	D
E	F	G	H
I	J	K	L
M	N	O	P

AUBURN TWP.  
 JANUARY, 1959  
 RELATIVE REPRESENTATION

\* Inadequate Description



TRACT THREE

SCALE 1" = 300  
 JANUARY 4, 1929

A	B	C	D
E	F	G	H
I	J	K	L
M	N	O	P

\* Inadequate Description

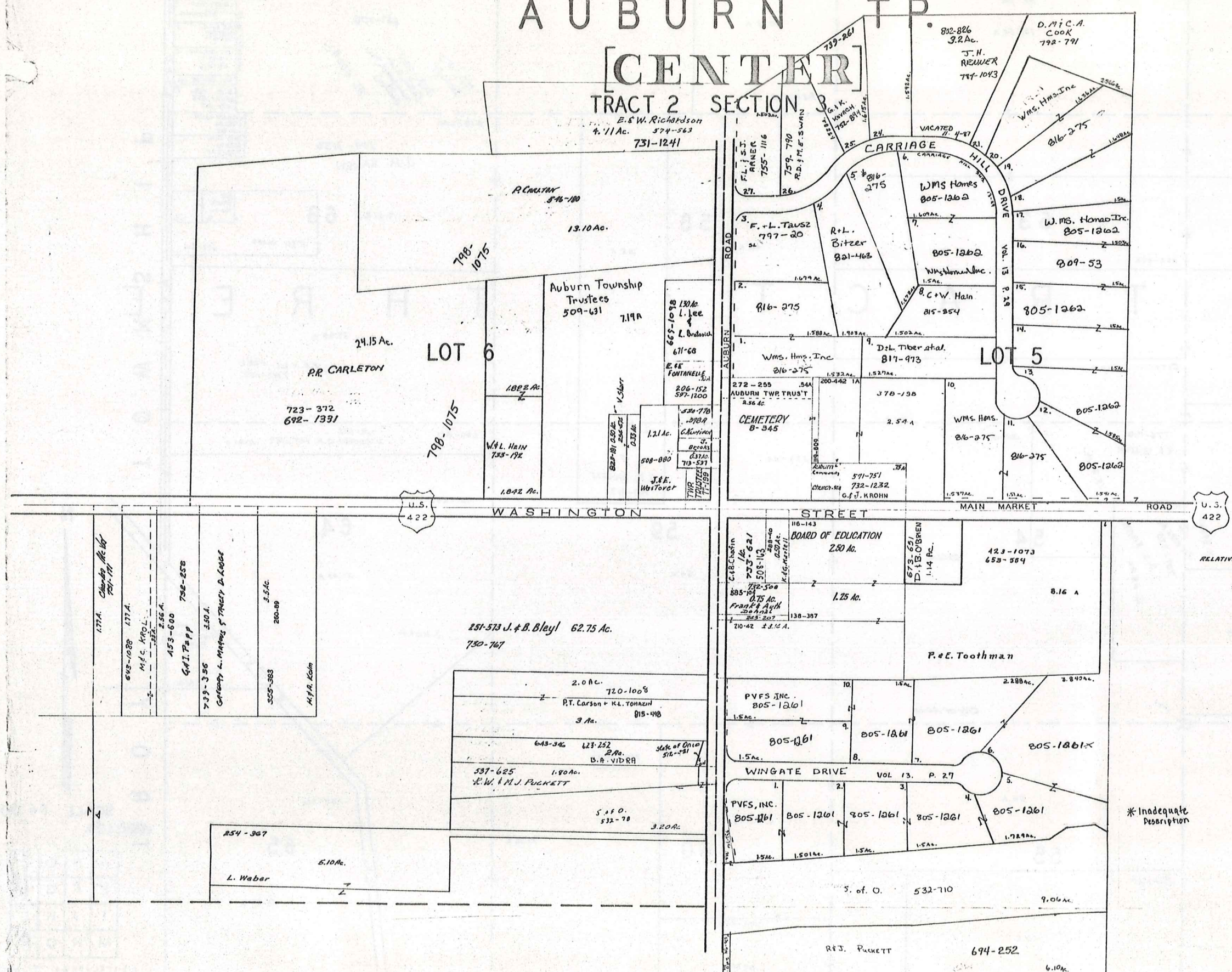
AUBURN TWP.



# AUBURN TP

## [CENTER]

### TRACT 2 SECTION 3



RELATIVE REPRESENTATION  
JANUARY 1, 1989

SCALE 1in. = 2.5ch. = 165ft.

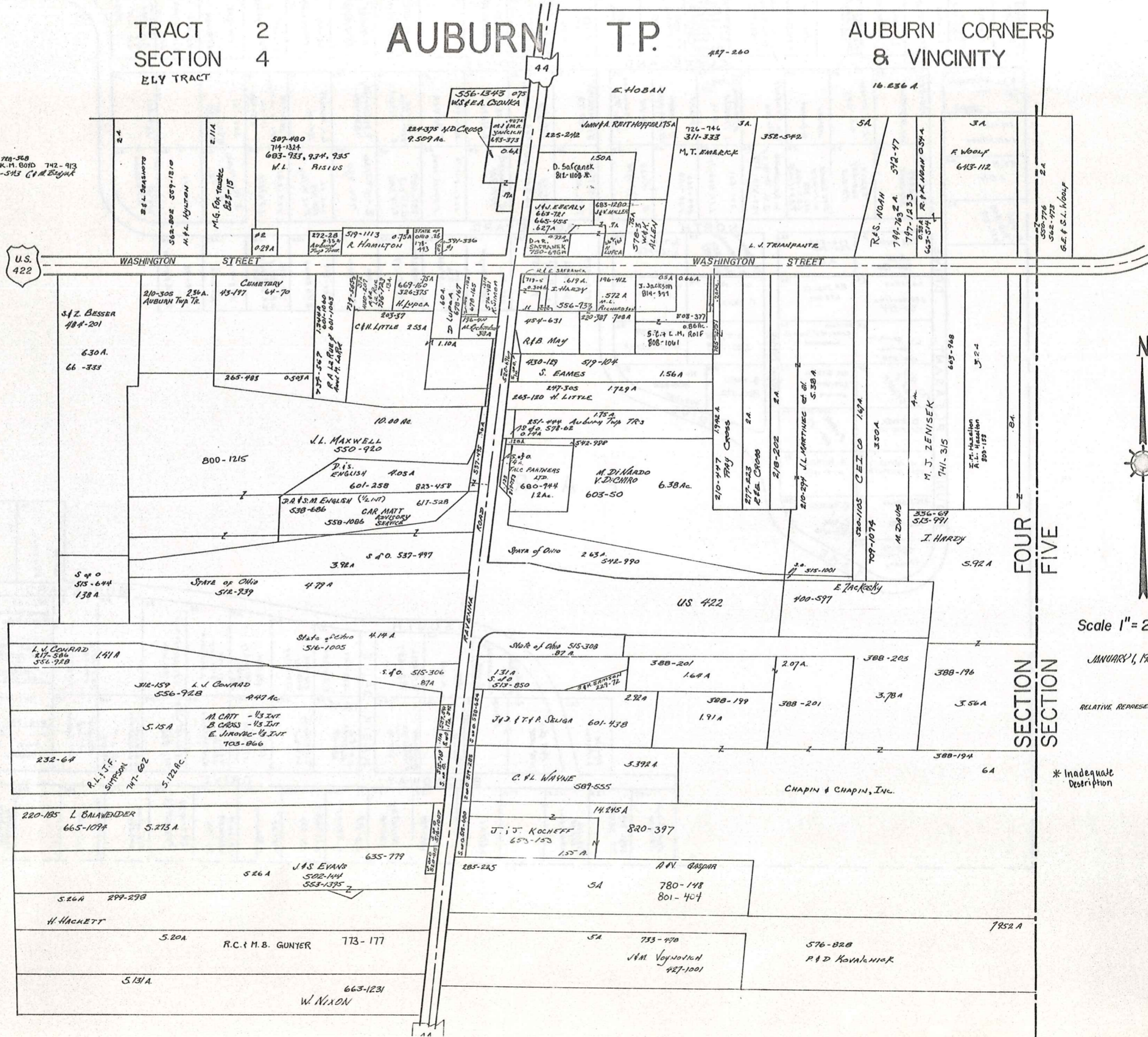
\* Inadequate Description

TRACT 2  
SECTION 4  
ELY TRACT

# AUBURN TP.

AUBURN CORNERS  
& VICINITY

01 788-548  
R. J. G. & M. BOYD 742-913  
X3 373-543 C.A.M. BRYANT



Scale 1" = 2.5 ch. = 165 ft.

JANUARY, 1929

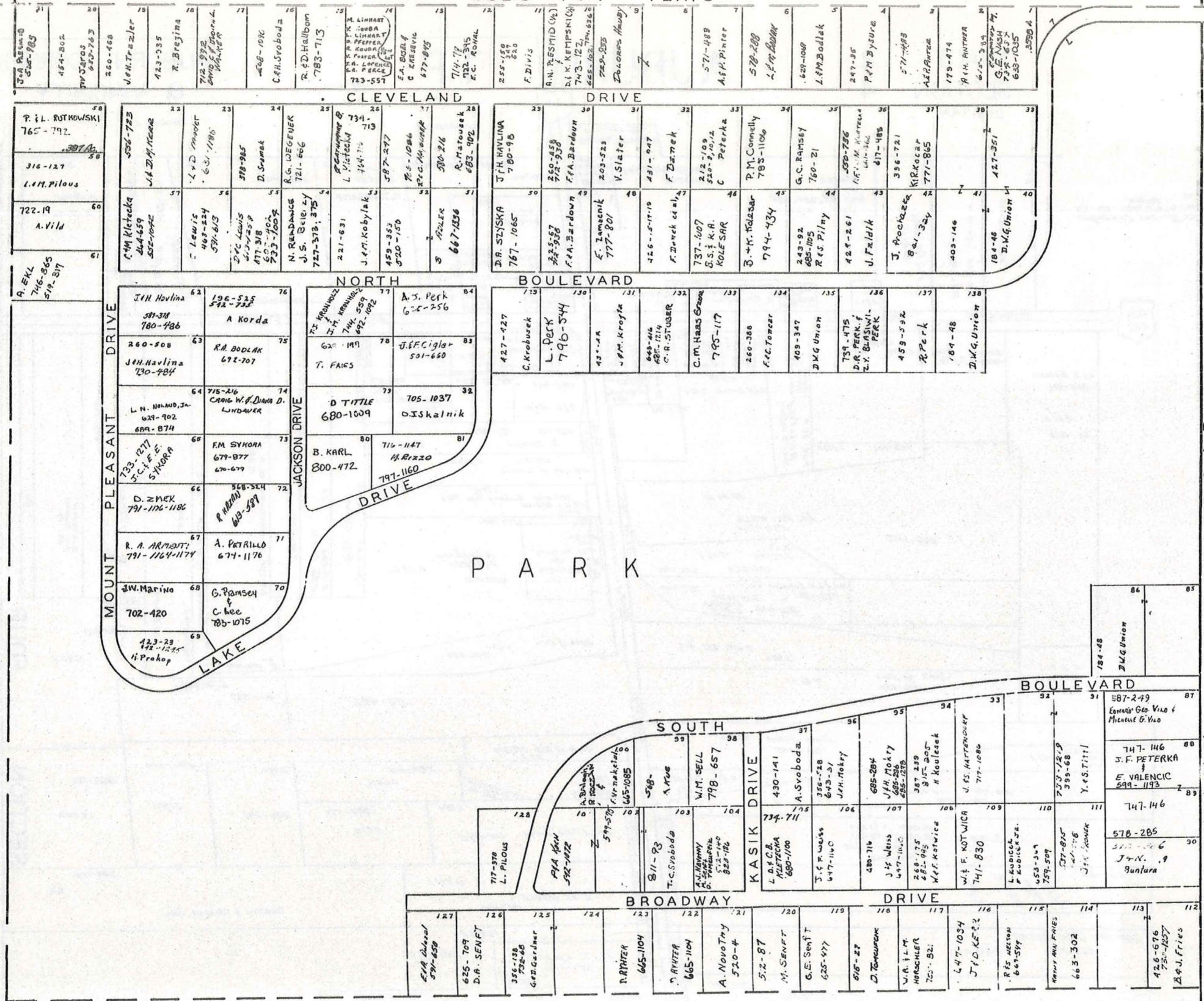
RELATIVE REPRESENTATION

\* Inadequate Description

SECTION FOUR  
SECTION FIVE

# TABOR SUBDIVISION

VOL. 3 - PG. 7 PLATS



N  
SCALE 1" = 100'

JANUARY 1, 1929  
AUBURN TWP.

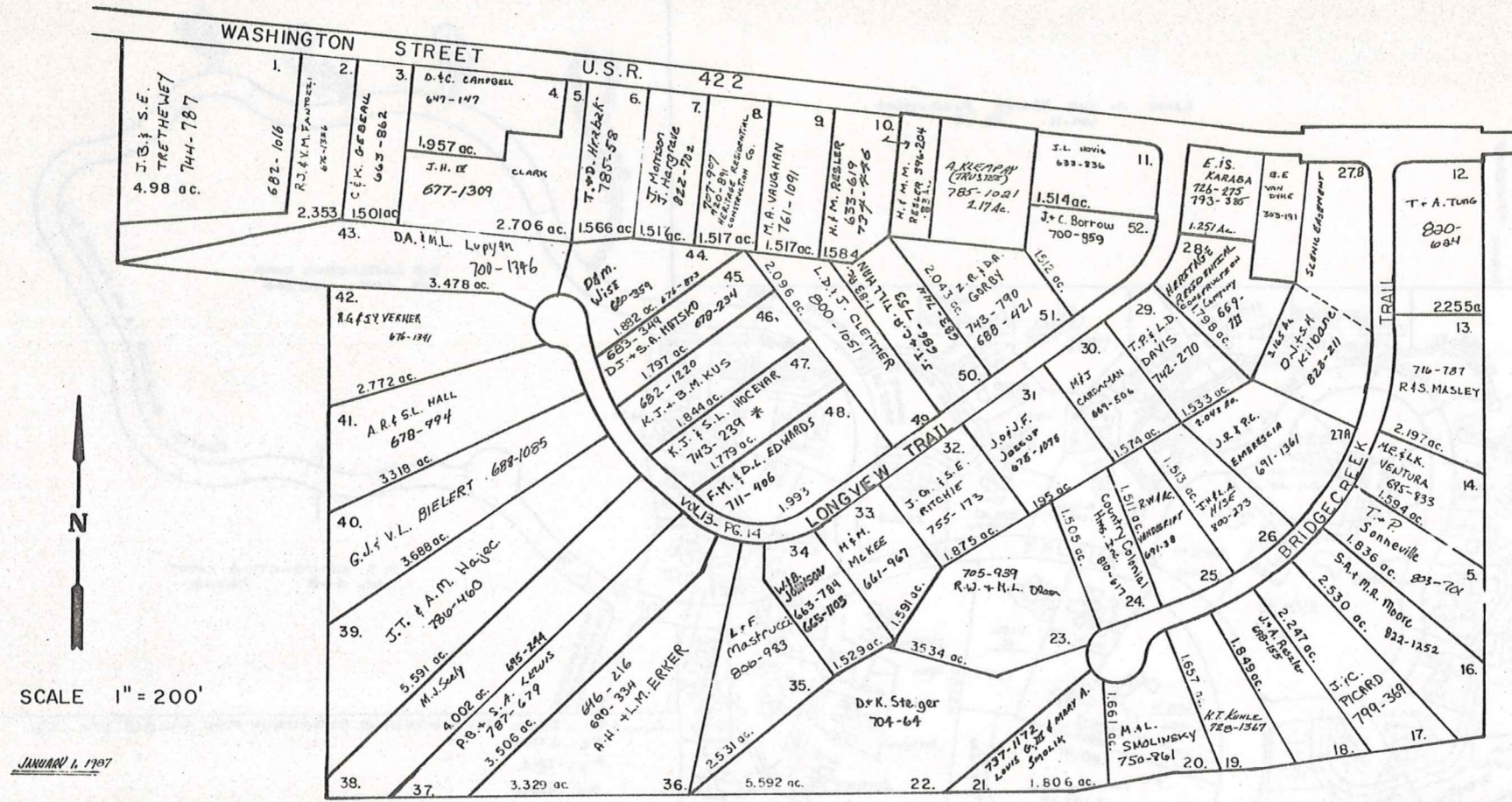
RELATIVE REPRESENTATION

\* Inadequate description

# AUBURN

O.L. 8 SEC. 2

O.L. 6 SEC. 3 TRACT 2



S/L 27 RESUB VOL. 14-P6.50

## LONGVIEW FARMS 1 & 2

VOL. 12 PP. 62-64

VOL. 13 PP. 13-16

JANUARY 1, 1907  
A. C. BENTON  
PLAT REPRESENTATION

\* Inadequate Description

LAND IN THE WOODS SUBDIVISION Vol. 11 Pg. 35

BLDG. 76 VOL. 17 PG. 47 TO 58 (HEATHER HILL)  
A-226 ~ S. Bianchini + N. Bean 813-676

BLDG. 75 VOL. 17 PG. 84 TO 92 (WOODSONG WAY)  
A-198 ~ M. U. Stanton-Hicks 821-1362

BLDG. 67 VOL. 17 PG. 84 TO 92 (OVERLOOK BROOK DRIVE)  
A-323 ~ H. A. Poff 821-303  
B-330 ~ E. Lazio 821-301

BLDG. 47 VOL. 17 PG. 8 TO 16 (WOODSONG WAY)  
A-202 ~ M. Pensiero 814-747

BLDG. 53 VOL. 17 PG. 8 TO 16 (TWIN CREEKS DRIVE)  
A-256 ~ J. B. Callier 817-560  
B-258 ~ H. H. Dunlop 813-919

BLDG. 70 VOL. 17 PG. 8 TO 16 (HEATHER HILL)  
A-210 ~ D. C. Sazima 815-1095  
B-208 ~ V. P. Scocos 813-697

BLDG. 2 VOL. 17 PG. 47 TO 58 (WINDWARD WAY)  
A-64 ~ P. A. Brindenden 819-69  
B-62 ~ T. Kinzig 820-200

BLDG. 75 VOL. 17 PG. 47 TO 58 (HEATHER HILL)  
A-204 ~ R. E. Glaze 818-119

BLDG. 40 VOL. 16 PG. 118 TO 122 (WOODSONG WAY)  
A-188 ~ G. R. Barnard 801-1242

BLDG. 65 VOL. 16 PG. 123 TO 126 (OVERLOOK BROOK DRIVE)  
A-312 ~ J. J. Hallack 803-927

BLDG. 54 VOL. 16 PG. 148 TO 155 (TWIN CREEKS DRIVE)  
A-262 ~ F. Adler 809-284

BLDG. 55 VOL. 16 PG. 148 TO 155 (TWIN CREEKS DRIVE)  
A-264 ~ G. S. Villers 820-363  
B-262 ~ J. M. Walton 809-1034

BLDG. 64 VOL. 16 PG. 148 TO 155 (OVERLOOK BROOK DRIVE)  
A-310 ~ M. S. Duffy 808-136

AUBURN LAKES CONDO ~ WINDWAY WAY (PRIVATE):

W-1: VOL. 15 - PG. 1  
A-66 ~ M. N. Lavin 718-161

W-2:  
A-64 ~  
B-62 ~  
C-60 ~

W-3: VOL. 14 - PG. 110 - 115  
A-54 ~ A. D'Onofrio 815-1040  
B-52 ~ W. J. Rini 708-427

W-4: VOL. 14 - PG. 110 - 115  
A-50 ~ D. Dolch 718-1127  
B-48 ~ D. O. Riethmiller 705-649

W-5:  
A-58 ~  
B-56 ~

W-6: VOL. 15 - PG. 1  
A-46 ~ D. J. Matz 718-203  
B-44 ~ Wayne L. Risus 735-1292  
C-42 ~ W. T. Masters 809-405

W-7: VOL. 14 - PG. 72  
A-40 ~ M. A. Berg + S. Lynn 823-949  
B-38 ~ H. Epprecht 700-1300  
C-36 ~ J. N. C. Holyland 714-720

W-8: VOL. 14 - PG. 130 - 136  
A-34 ~ R. B. Merian 715-102  
B-32 ~

W-9: VOL. 14 - PG. 72 (WINDWARD WAY)  
A-30 ~ B. S. Jersbark 713-468  
B-28 ~ W. H. Thompson 710-24  
C-26 ~ Carol L. Mayer 733-1031

W-10: VOL. 14 - PG. 110 - 115  
A-24 ~ J. J. + S. M. Kalkiser 703-221  
B-22 ~ K. D. Werner 707-1185  
C-20 ~ H. B. Wieland 717-745; 713-263

W-11: VOL. 14 - PG. 130 - 136  
A-18 ~ M. L. Vitale 716-1917  
B-16 ~

W-12: VOL. 14 - PG. 72  
A-14 ~ R. J. Sculli 701-737  
B-12 ~ D. X. Rooy 799-1181  
C-10 ~ Stephen M. O. Charlotte I. G. M. 727-160

BLDG. 21: VOL. 14 - PG. 124 / VOL. 15 - PG. 21  
A-100 ~ R. B. Bernley 809-1223  
B-102 ~ K. D. Dingwell 823-1079  
C-104 ~ W. L. Risius 757-150

BLDG. 20: VOL. 14 - PG. 141 - 144  
A-96 ~ Mark + Nancy Miles 722-681  
B-98 ~ R. G. Roberts 716-97

BLDG. 34: VOL. 15 - PG. 1  
A-100 ~ G. M. Hartley 793-647  
B-102 ~ V. B. Weber 822-476  
C-104 ~ Ramon J. + Carol J. S. 136-779

UNIT 15: VOL. 15 - PG. 17 (Cove Court)  
A-74 ~ T. D. Clark 765-634  
B-70 ~ Robert J. Kiebler 739-750  
C-78 ~ Leadworks, Inc. 726-151

Unit 19: Vol 15 pg 27  
A-92 ~ N. D. Jubell 809-1233  
B-94 ~ M. Jacqueline Mayer 726-377  
C-96 ~ 726-1081

BLDG. (UNIT) 14: VOL. 15 - PG. 48 TO 52  
A-68 ~ C. J. + R. D. McBride 749-657  
B-70 ~ Thomas + Gloria Caves 729-120  
C-72 ~ Donald + Doris Wise 730-344

UNIT 28 Vol 15-56  
A-138 ~ Douglas + Dianne Cuard 730-152  
B-140 ~ Howard B. + Shirley D. Marx 733-497

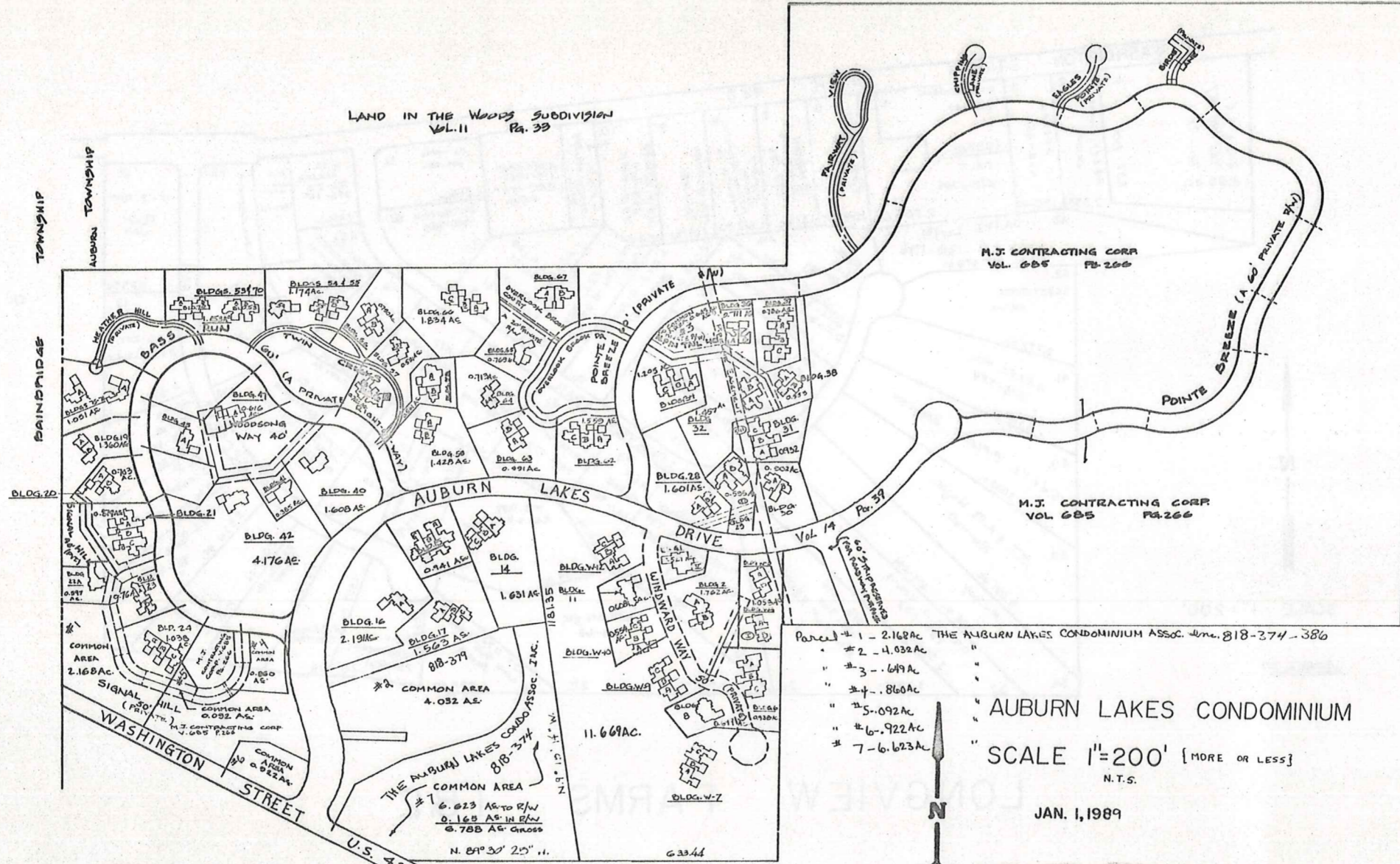
UNIT 41 Vol 15 pg 60-67  
M. Robert + Geraldine M. Verarr 734-1265

UNIT 29: VOL. 15 - PG. 60 (S. PINTAIL)  
A-142 ~ Joel J. + Selma L. Lipman 736-927  
B-144 ~ T. W. + B. L. Hunter 713-211

UNIT 17: VOL. 15 - PG. 91 (CLUB LANE)  
A-84 ~ T. G. Kuhnle 757-1026  
B-86 ~ S. M. Thompson 711-867  
C-88 ~ H. T. Fay 748-810

\* Inadequate Description

LAND IN THE WOODS SUBDIVISION Vol. 11 Pg. 35



AUBURN LAKES CONDOMINIUM

SCALE 1"=200' [MORE OR LESS]

JAN. 1, 1989

RELATIVE REPRESENTATION

BLDG. 16: VOL. 15 - PG. 119 - 127 (CLUB LANE)  
A-80 ~ R. L. + R. Mintz 753-792

BLDG. 36: VOL. 15 - PG. 119 - 127 (N. PINTAIL)  
A-170 ~ D. H. + L. W. Mathews 756-779  
B-172 ~ E. V. Gordon 759-1162

BLDG. 37: VOL. 15 - PG. 143 - 146 (NORTH PINTAIL)  
A-174 ~ W. H. + W. P. Thompson 712-224  
B-176 ~ R. Post (husband) 814-1054  
C-178 ~ R. S. + B. M. Gill, Jr. 712-863

BLDG. 58: VOL. 15 - PG. 149 - 153 (TWIN CREEKS)  
A-278 ~ D. J. Jones 716-1  
B-280 ~ S. H. R. L. Silver 714-1079

BLDG. 22: VOL. 15 - PG. 70 (SIGNAL HILL)  
A-110 ~ Richard J. + Kathryn A. Manfredi 740-471

BLDG. 30: VOL. 15 - PG. 70  
A-106 ~ E. O. March 740-933  
B-104 ~ Donald H. + Martha R. Enlow 737-521

BLDG. 31: VOL. 15 - PG. 83 (N. PINTAIL)  
A-146 ~ E. B. + S. M. Gallo 758-746  
B-148 ~ B. A. Fritzsche 750-777  
C-150 ~ G. L. + R. N. Poff 745-1340

BLDG. 23: VOL. 15 - PG. 91 (SIGNAL HILL)  
A-112 ~ T. D. Evans 749-865  
B-114 ~ D. L. + M. C. Booher 760-4

BLDG. 32: VOL. 15 - PG. 91  
A-152 ~ D. C. + R. G. Skinner 751-889  
B-154 ~ W. K. Olivier 751-554

BLDG. 59: VOL. 16 - PG. 35 TO 42 (TWIN CREEKS)  
A-282 ~ R. C. + S. C. Marchant 787-472  
B-284 ~ S. C. Thompson 784-1185

BLDG. 66: VOL. 16 - PG. 35 TO 42 (OVERLOOK BROOK COURT)  
A-326 ~ G. + M. J. Swaney 787-630  
B-324 ~ R. M. Erickson 820-456  
C-322 ~ C. J. + M. S. Giblin 786-1362

BLDG. 42: VOL. 16 - PG. 43 TO 46 (WOODSONG WAY)  
42-192 ~ E. Viscosi 807-578

BLDG. 57: VOL. 16 - PG. 72 TO 76 (TWIN CREEKS)  
57- ~ R. K. Swick 744-955

BLDG. 50: VOL. 16 - PG. 82 TO 92 (TWIN CREEKS)  
A-240 ~ L. + R. Crouse 797-765  
B-242 ~ P. + E. Chappé 848-37

BLDG. 56: VOL. 16 - PG. 82 TO 92 (TWIN CREEKS)  
A-244 ~ P. + F. Keleher 799-031  
B-246 ~ E. A. Leonetti 797-758

BLDG. 63: VOL. 16 - PG. 82 TO 92 (OVERLOOK BROOK DRIVE)  
A-304 ~ P. L. Farow 780-130  
B-306 ~ C. K. Zachem 780-1056

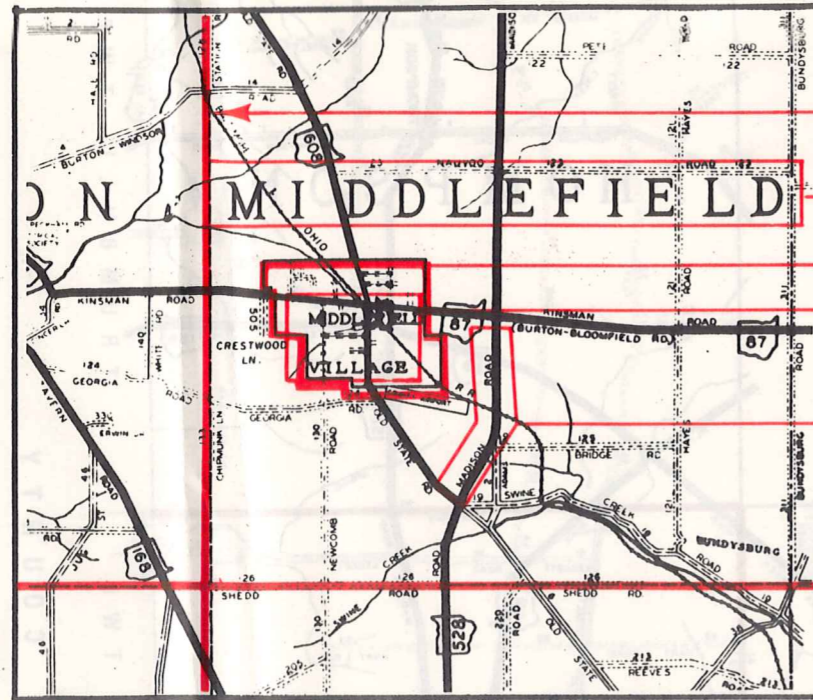
BLDG. 62: VOL. 16 - PG. 8 TO 11 (OVERLOOK BROOK DRIVE)  
A-278 ~ B. J. Dwyer + L. C. Mullen 773-655  
B-300 ~ W. S. + R. M. Koval 774-635  
C-302 ~ K. F. Wilson 773-446

BLDG. 38: VOL. 16 - PG. 19 TO 23 (N. PINTAIL)  
A-180 ~ W. N. + J. M. Schwilger 778-1188  
B-182 ~ H. + R. Borsari 789-397

BLDG. 24: VOL. 16 - PG. 24 TO 34 (SIGNAL HILL)  
A-110 ~ R. J. Kichler 821-1229  
B-118 ~ R. A. Green 782-210  
C-120 ~ J. Smith 817-747

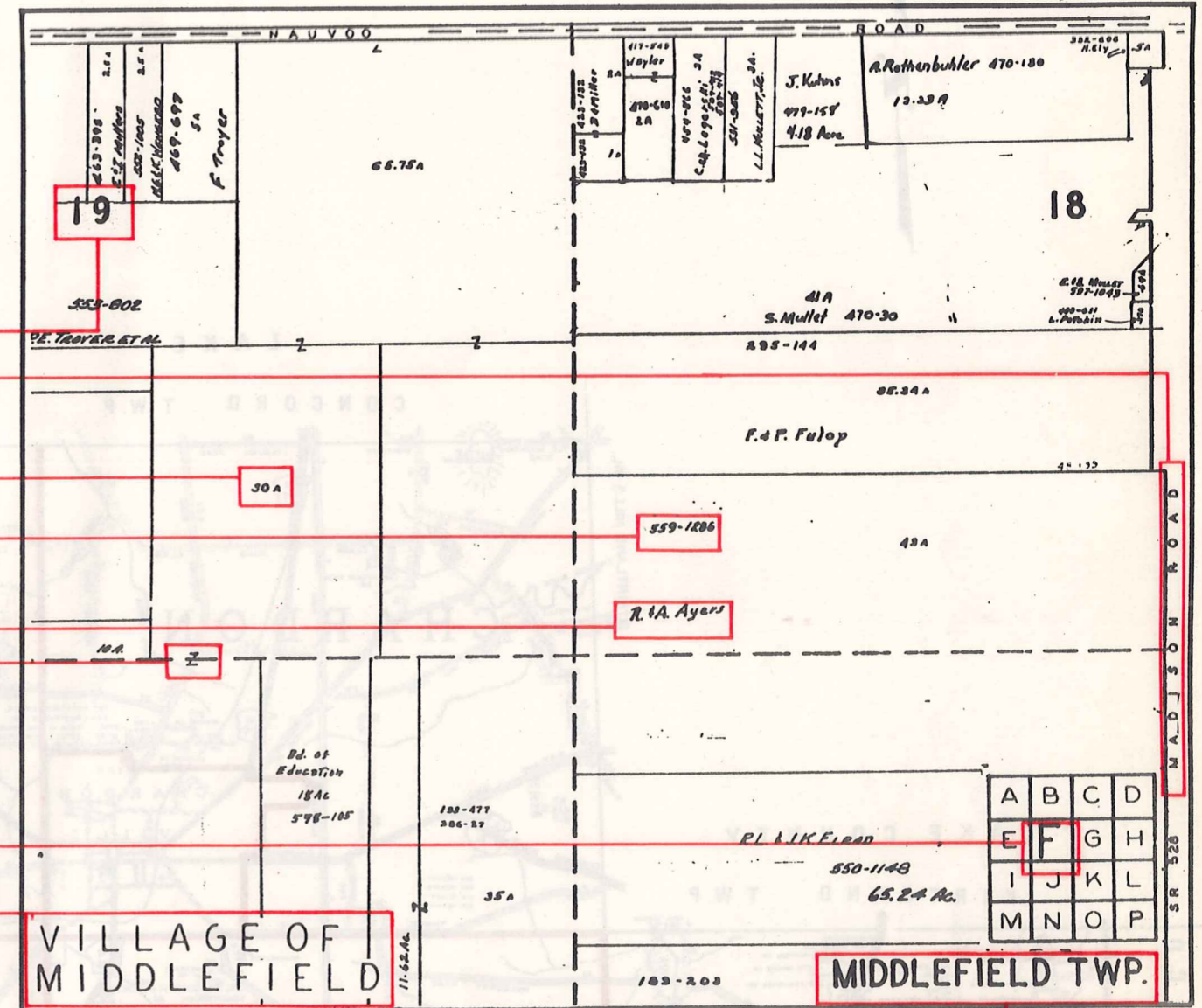
# Explanation and Use Sheet for Geauga County, Ohio

SAMPLE (PARTIAL) COUNTY INDEX MAP



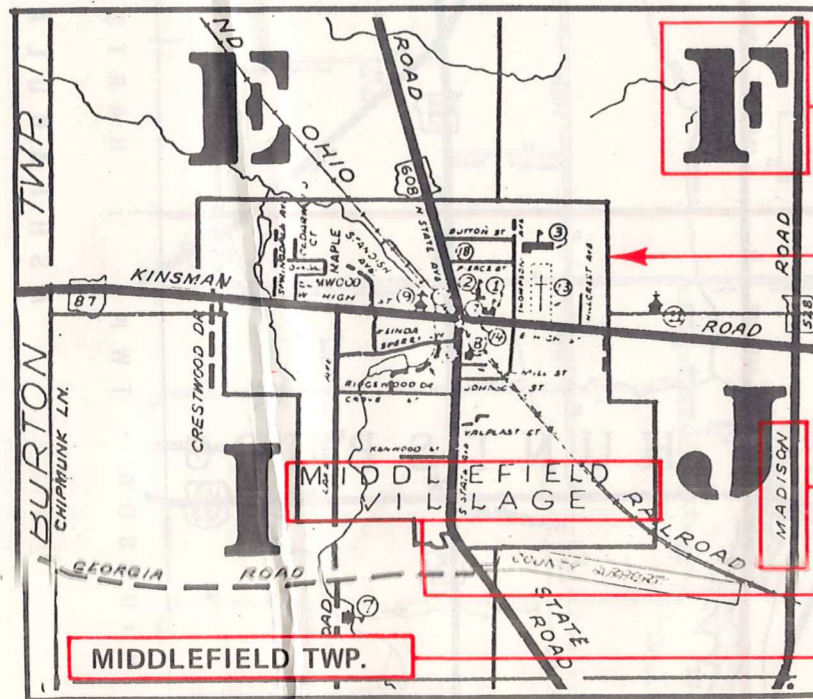
- Township Boundary
- Township Name
- Village Boundary
- Village Name
- Tract Lot Number
- Street Name
- Acreage
- Deed Book & Page
- Owners Name
- Denotes Continous Ownership

SAMPLE (PARTIAL) MAP PAGE



- Map Page Number
- Village Name
- Village Boundary
- Township Name

SAMPLE (PARTIAL) MUNICIPALITY INDEX MAP



- Street Name
- Village Name
- Township Name

## USE OF THE MAP VOLUME

1. LOCATE THE GENERAL AREA OF INTEREST ON THE COUNTY INDEX MAP, ATLAS PAGE 'B', AND NOTE THE MUNICIPALITY NAME (TOWNSHIP OR VILLAGE).
2. REFER TO THE TABLE OF CONTENTS, ATLAS PAGE 'C', AND NOTE THE BEGINNING ATLAS PAGE NUMBER FOR THE MUNICIPALITY OF INTEREST.
3. TURN TO THE PAGE INDICATED. ON THIS PAGE WILL APPEAR AN INDEX MAP FOR THAT MUNICIPALITY.
4. LOCATE THE GENERAL AREA OF INTEREST AND NOTE THE MAP PAGE NUMBER. THIS MAY BE EITHER A LETTER OR A NUMBER.
5. MAP PAGES ARE IN ALPHABETICAL (OR NUMERICAL) SEQUENCE FOLLOWING THE MUNICIPALITY INDEX MAP. FOLLOW SEQUENCE TO THE MAP PAGE INDICATED.
6. LOCATE SPECIFIC PARCEL OF INTEREST AND NOTE THE DESIRED INFORMATION.

NOTE: ON SOME MAPS YOU MAY BE REFERRED TO A DETAIL SHEET SHOWING AN ENLARGEMENT OF THE AREA. THESE MAPS ARE FOUND AT THE END OF THE REGULAR MAP PAGES IN EACH MUNICIPALITY IN EITHER ALPHABETICAL OR NUMERICAL SEQUENCE.

NOTE: CHARDON VILLAGE HAS TITLE SHEETS. TO LOCATE OWNERS NAME, NOTE THE PARCEL NUMBER, REFER TO THE TITLE PAGE FOLLOWING THE MAP OF INTEREST, FOLLOW NUMERICAL SEQUENCE TO THE PARCEL NUMBER OF INTEREST AND NOTE THE DESIRED INFORMATION. IN ALL OTHER MUNICIPALITIES THE OWNERS NAME APPEARS ON THE MAP PAGE.

This book is the property of REAL ESTATE DATA, INC. and is distributed by REDI under a leasing arrangement requiring return to REDI upon termination of the lease. REDI reserves the right to reclaim this book if found in the possession of any firm or person where possession was obtained through any unauthorized source.